



RSA ARCHER 6.1 UPDATED USE CASES

BUSINESS IMPACT ANALYSIS

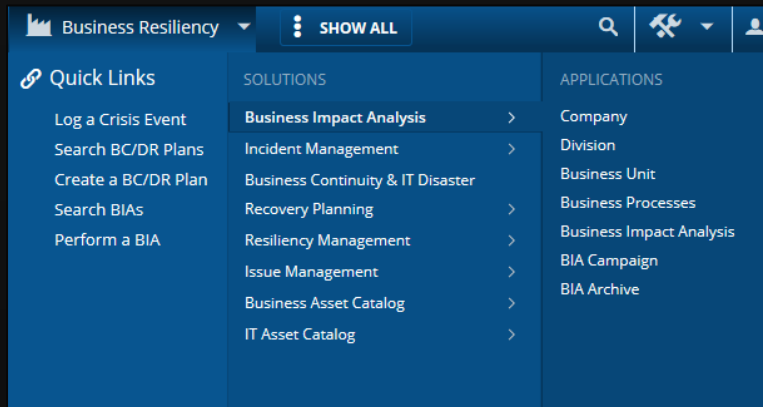
RSA

Why Business Impact Analysis?

- ▶ **Foundational at it's core**
- ▶ **Criticality used through-out Archer**
- ▶ **Leverage New 6.x Functionality**
- ▶ **Walk-up Friendly**
- ▶ **Everyone Owns Risk!**

Agenda: Business Impact Analysis

- ▶ High Level Overview
- ▶ Personas & Swim Lanes
- ▶ Live Demonstration
 - ▶ BIA Campaign & BIA Workflow
- ▶ Questions & Wrap Up



Business Impact Analysis: What's New

▶ 1:1 Business Impact Analysis Record : Business Process

▶ Business Impact Analysis Out-of-the-box Advanced Workflow

▶ Update Content: Date Node

▶ Copy from Business Process Datafeed

▶ Calculations

▶ 5 Level Criticality

▶ 6 Level Recovery Objective

▶ BIA Campaign Application

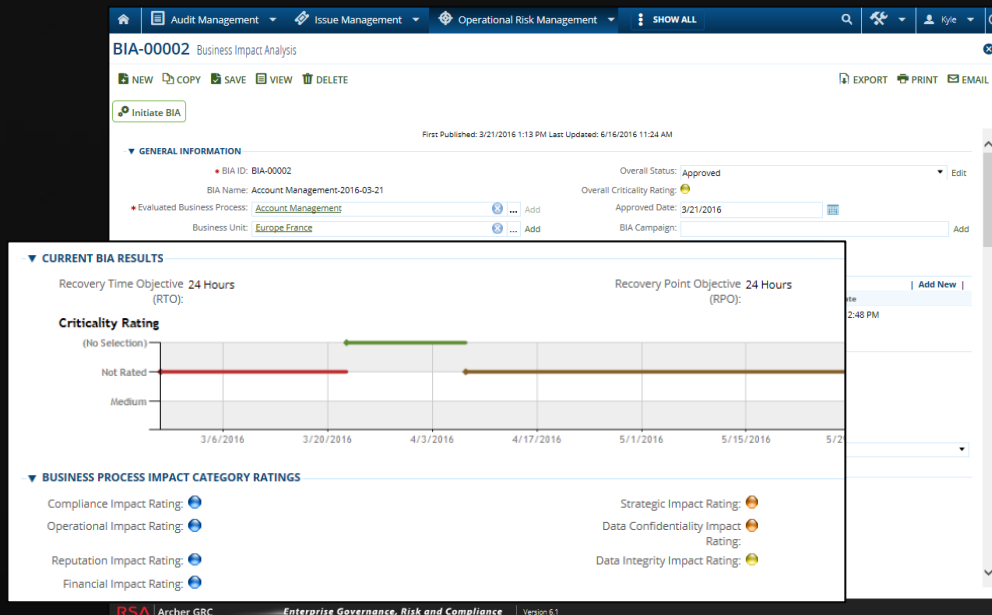
▶ BIA Campaign Advanced Workflow Node

▶ BIA Archive Application

▶ BIA Archive Datafeed

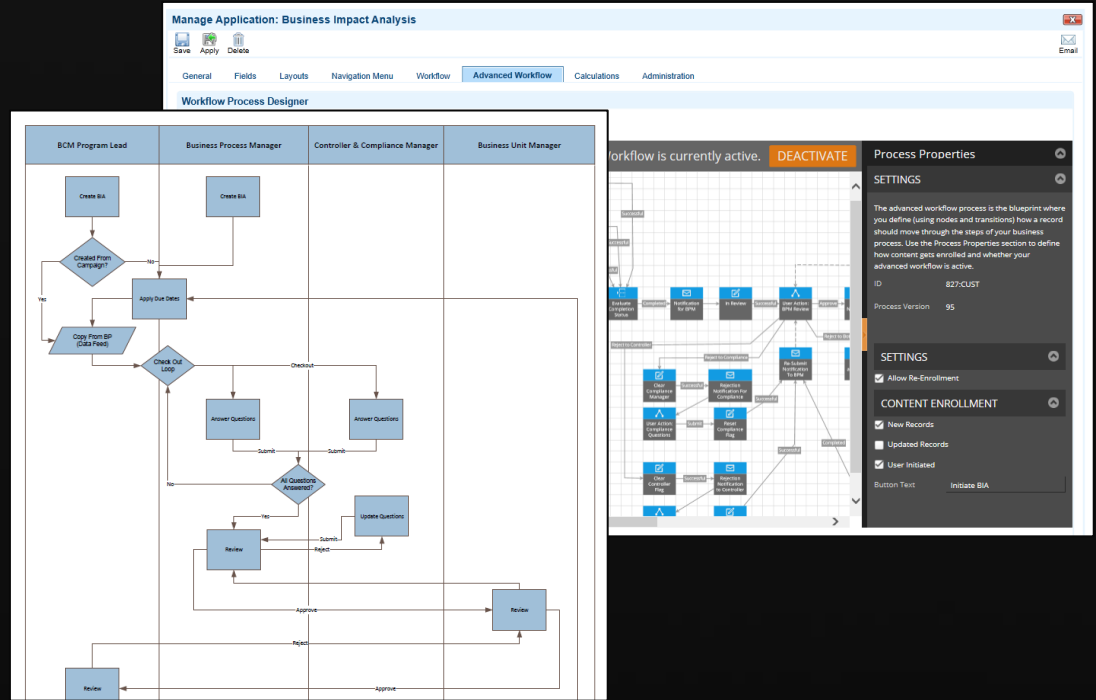
▶ Business Process Application Update

▶ Trending

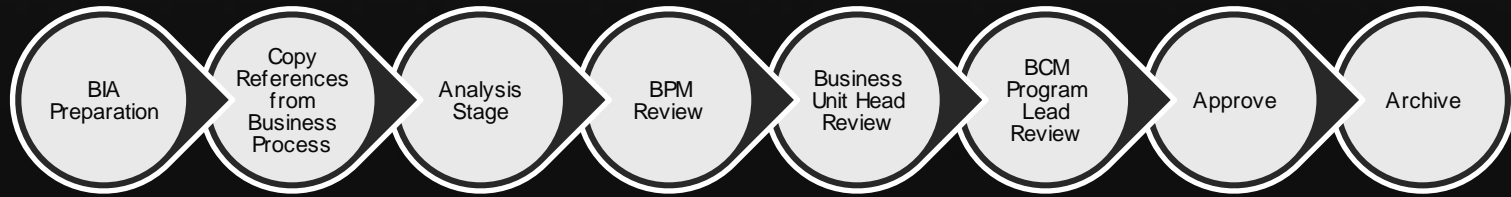


BIA Personas & Swim Lanes

- ▶ **Analysis Stage**
 - ▶ Business Process Manager
 - ▶ Compliance Manager (Business Unit)
 - ▶ Controller (Business Unit)
- ▶ **Review Stage**
 - ▶ Business Process Manager
 - ▶ Business Unit Manager
 - ▶ BCM Program Lead



Advanced Workflow



QUESTIONS?
CONTACT: KYLE.BLACK@RSA.COM



Thank you!