

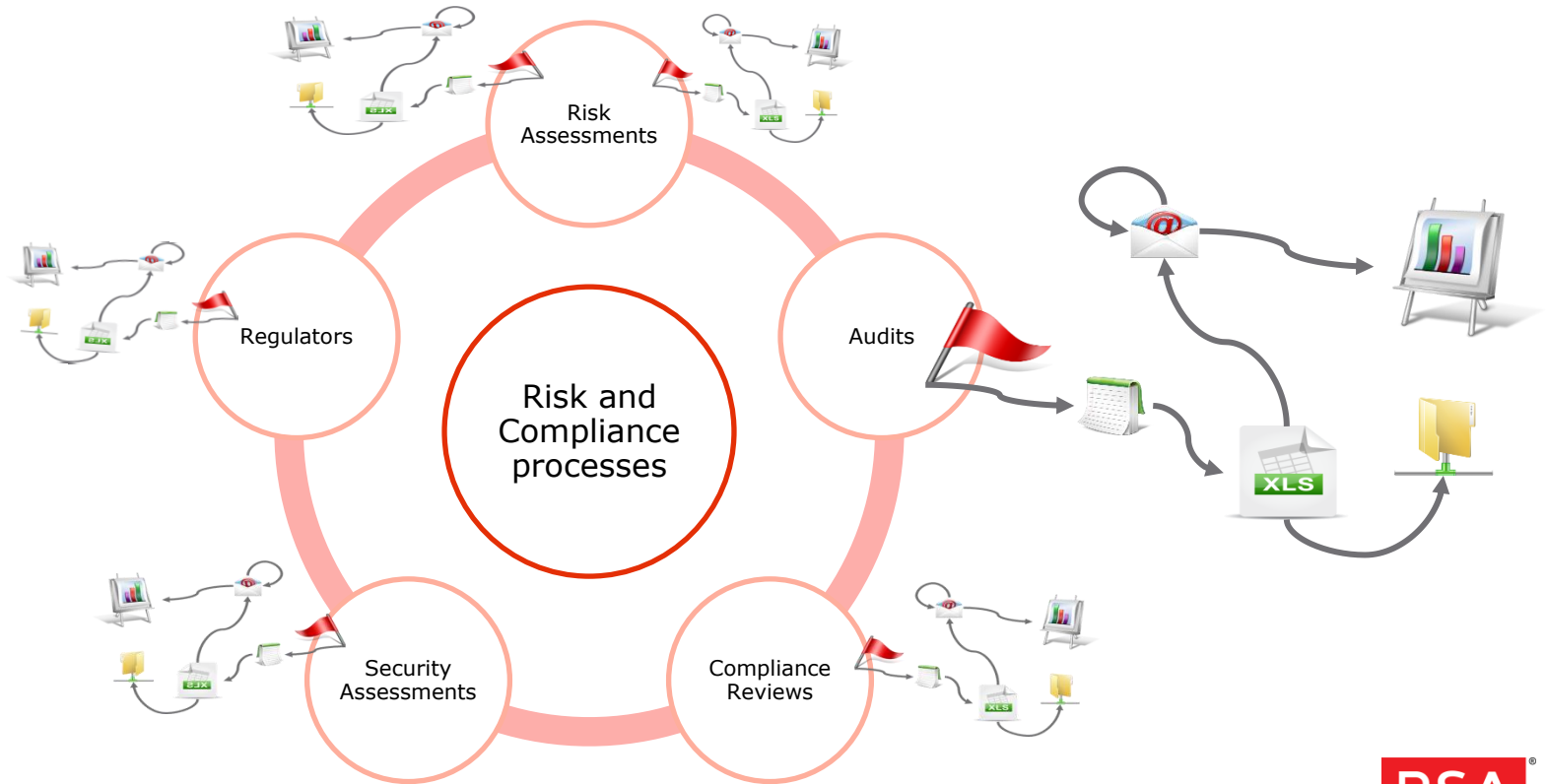
A person is seen from behind, sitting at a desk with two computer monitors. The left monitor displays a dashboard with a list of items and a pie chart. The right monitor displays a dashboard with a bar chart and a line graph. The person's hands are on a keyboard. A red horizontal bar is positioned above the main title text.

TECH HUDDLE – ISSUES MANAGEMENT

JULY 29TH 2016

RSA

Where do your issues come from?



The Issue "Pit"...

- Scattered lists of issues and findings in various documents (Excel, Word, Exchange, Sharepoint)
- No consolidated view of outstanding issues related to audits, compliance or risk assessments
- Limited documentation on current or planned remediation efforts to address open risks
- No list of approved, accepted known risks



Leads to Increased Risk.



- No visibility or accountability in addressing known risks
- Missed issues that fall through the cracks
- Repeat audit findings
- Missed deadlines, poorly planned projects to remediate identified risks
- Open security vulnerabilities



RSA Archer Issue Management

Establish clear ownership of issues

Accountability

Ensure proper sign-off/approval for issues

Collaboration

Automate the workflow for issues

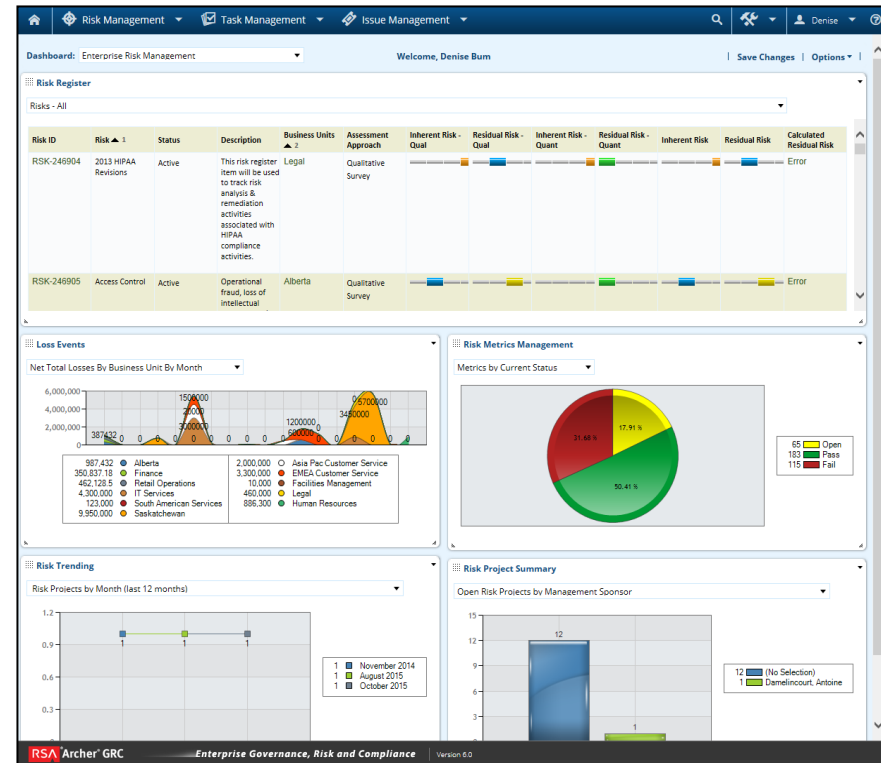
Automation

Monitor issues and efforts to address risk

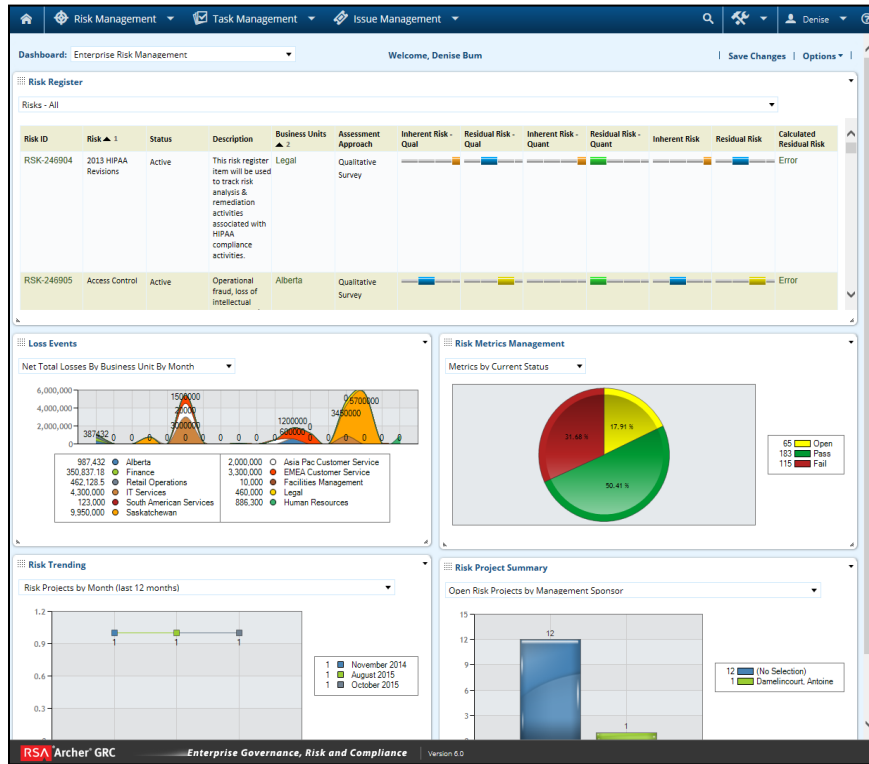
Visibility

Report and escalate issues quickly

Efficiency



RSA Archer Issue Management



Risk and Control owners understand their responsibilities in dealing with risk and compliance gaps.



Business Line managers gain a consolidated view into what issues their teams are working on.



Auditors get a view across GRC processes to tackle the most pressing issues of the business.



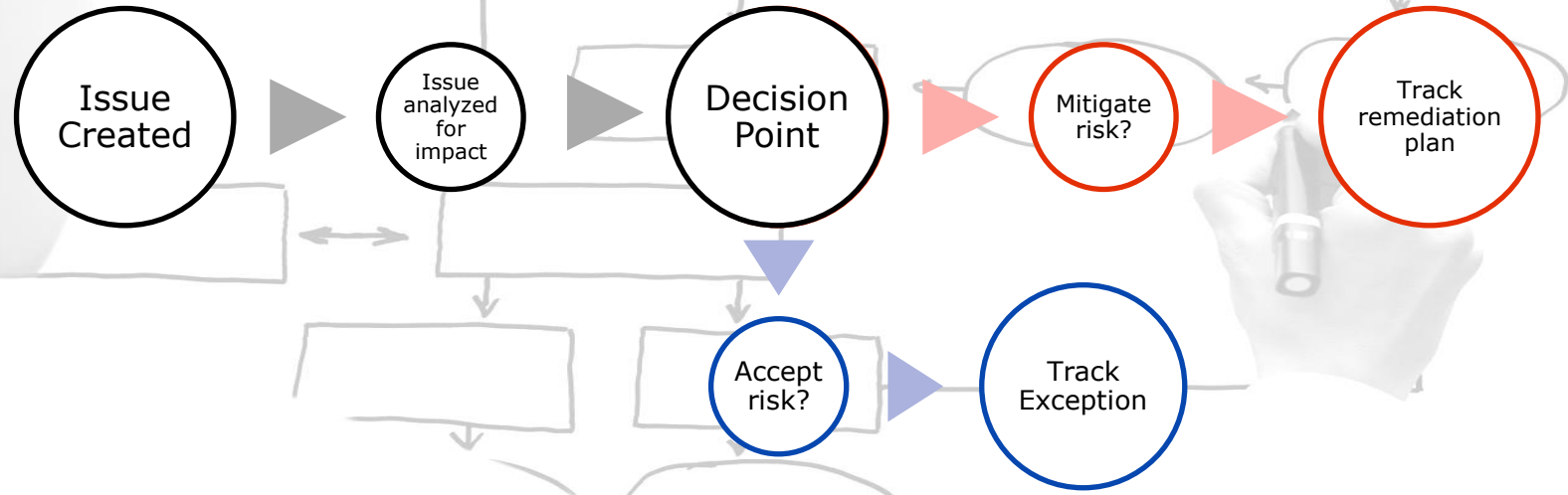
GRC teams can top the Excel madness, consolidate efforts, build workflows and reduce efforts to chase down issues.



Executives can adjust resources to focus on the right risks and high impact issues.



RSA Archer Issue Management

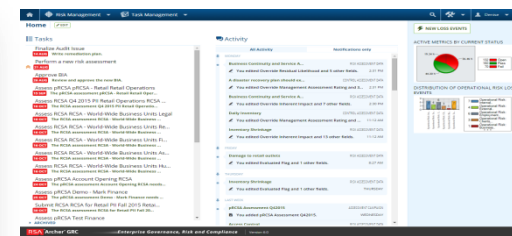
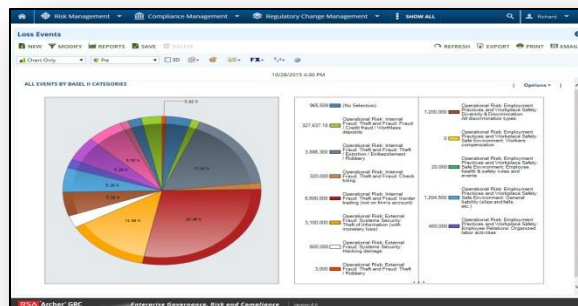
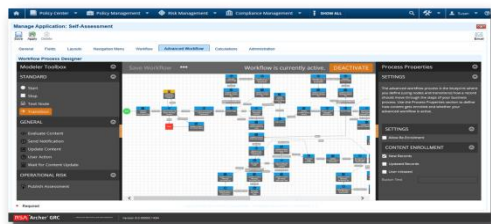


- Identified issues are managed and mitigated
- Stronger, quicker reaction to emerging risks
- More secure and compliant environment
- Reduced costs

RSA Archer Issue Management

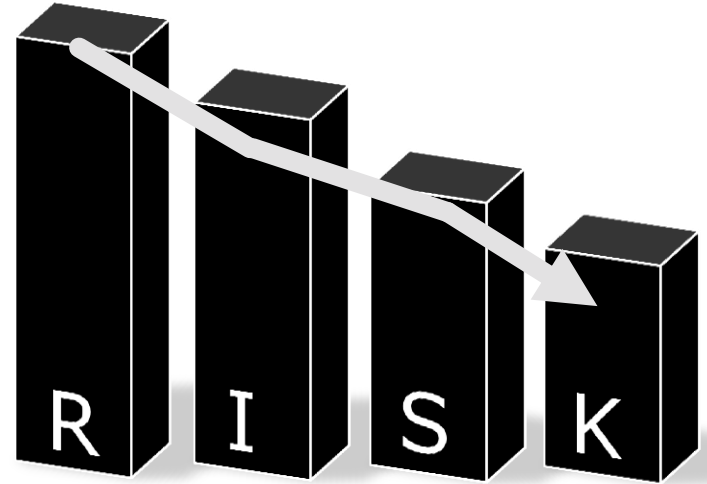
The solution:

- Consolidates the Issues Management process
- Centralizes Findings from Risk, Compliance and Audit processes
- Manages and tracks Remediation Plans for GRC issues
- Manages exceptions with appropriate risk sign-off/acceptance



Know your Gaps, Take Action

- Reduce time to resolution on critical, high risk issues
- Improve staffing management for remediating issues
- Reduce reactive overload for operations and business owners
- Reduce repeat audit findings



Reduce your overall risk by knowing the issues that matter

